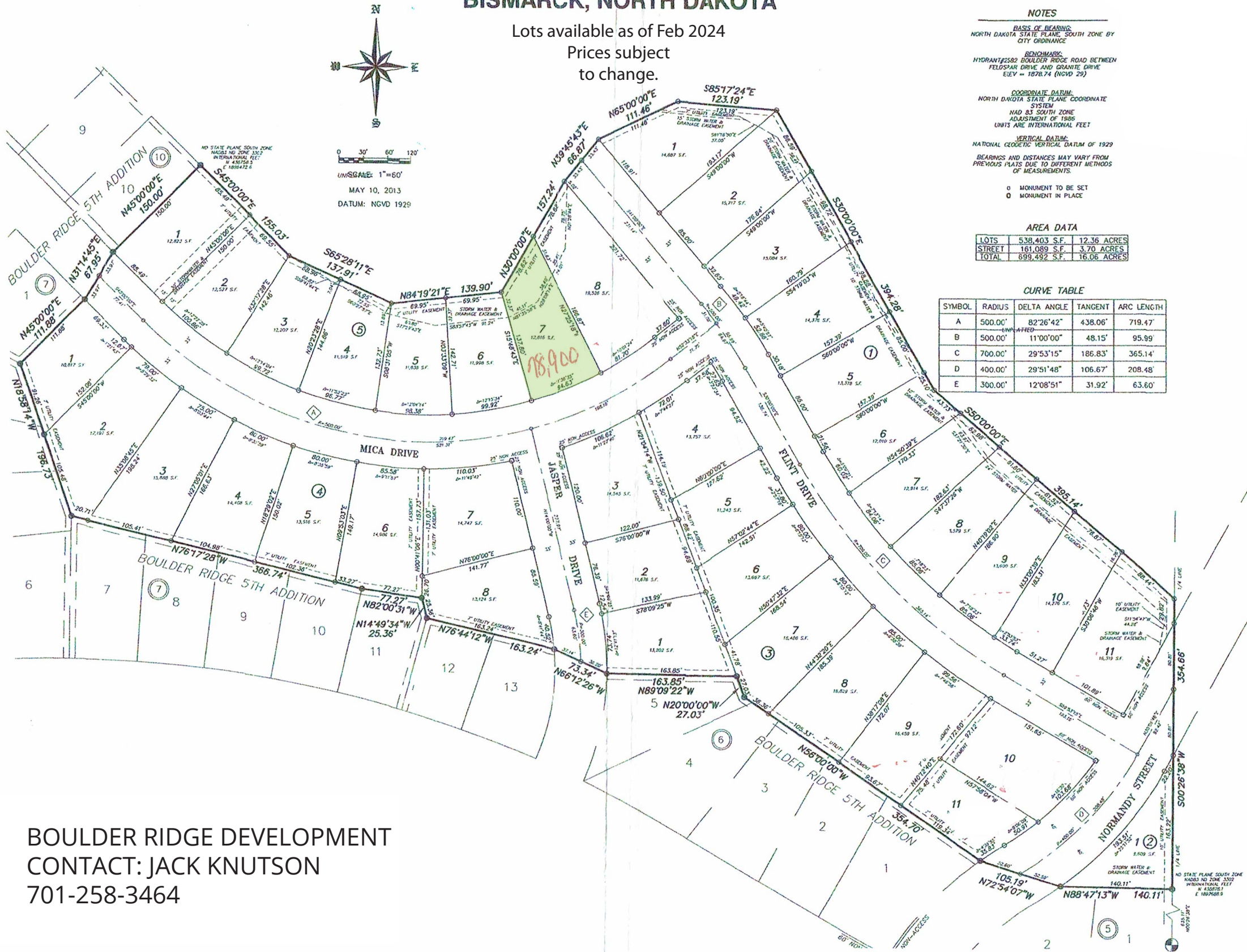


BOULDER RIDGE SIXTH ADDITION

PART OF THE NW 1/4 OF
SECTION 16, TOWNSHIP 139 NORTH, RANGE 80 WEST OF THE 5TH PRINCIPAL MERIDIAN, BURLEIGH COUNTY,
BISMARCK, NORTH DAKOTA

Lots available as of Feb 2024
Prices subject
to change.



NOTES

BASIS OF BEARING:
NORTH DAKOTA STATE PLANE SOUTH ZONE BY
CITY ORDINANCE

BENCHMARK:
HYDRANT#2582 BOULDER RIDGE ROAD BETWEEN
FELDSPAR DRIVE AND GRANITE DRIVE
ELEV = 1878.74 (NGVD 29)

COORDINATE DATUM:
NORTH DAKOTA STATE PLANE COORDINATE
SYSTEM
HAD 83 SOUTH ZONE
ADJUSTMENT OF 1986
UNITS ARE INTERNATIONAL FEET

VERTICAL DATUM:
NATIONAL GEODETIC VERTICAL DATUM OF 1929
BEARINGS AND DISTANCES MAY VARY FROM
PREVIOUS PLATS DUE TO DIFFERENT METHODS
OF MEASUREMENTS.

- MONUMENT TO BE SET
- ◻ MONUMENT IN PLACE

AREA DATA

LOTS	538,403 S.F.	12.36 ACRES
STREET	161,089 S.F.	3.70 ACRES
TOTAL	699,492 S.F.	16.06 ACRES

CURVE TABLE

SYMBOL	RADIUS	DELTA ANGLE	TANGENT	ARC LENGTH
A	500.00'	82°26'42"	438.06'	719.47'
B	500.00'	11°00'00"	48.15'	95.99'
C	700.00'	29°53'15"	186.83'	365.14'
D	400.00'	29°51'48"	106.67'	208.48'
E	300.00'	12°08'51"	31.92'	63.60'

BOULDER RIDGE DEVELOPMENT
CONTACT: JACK KNUTSON
701-258-3464