

# BOULDER RIDGE SEVENTH ADDITION FIRST REPLAT

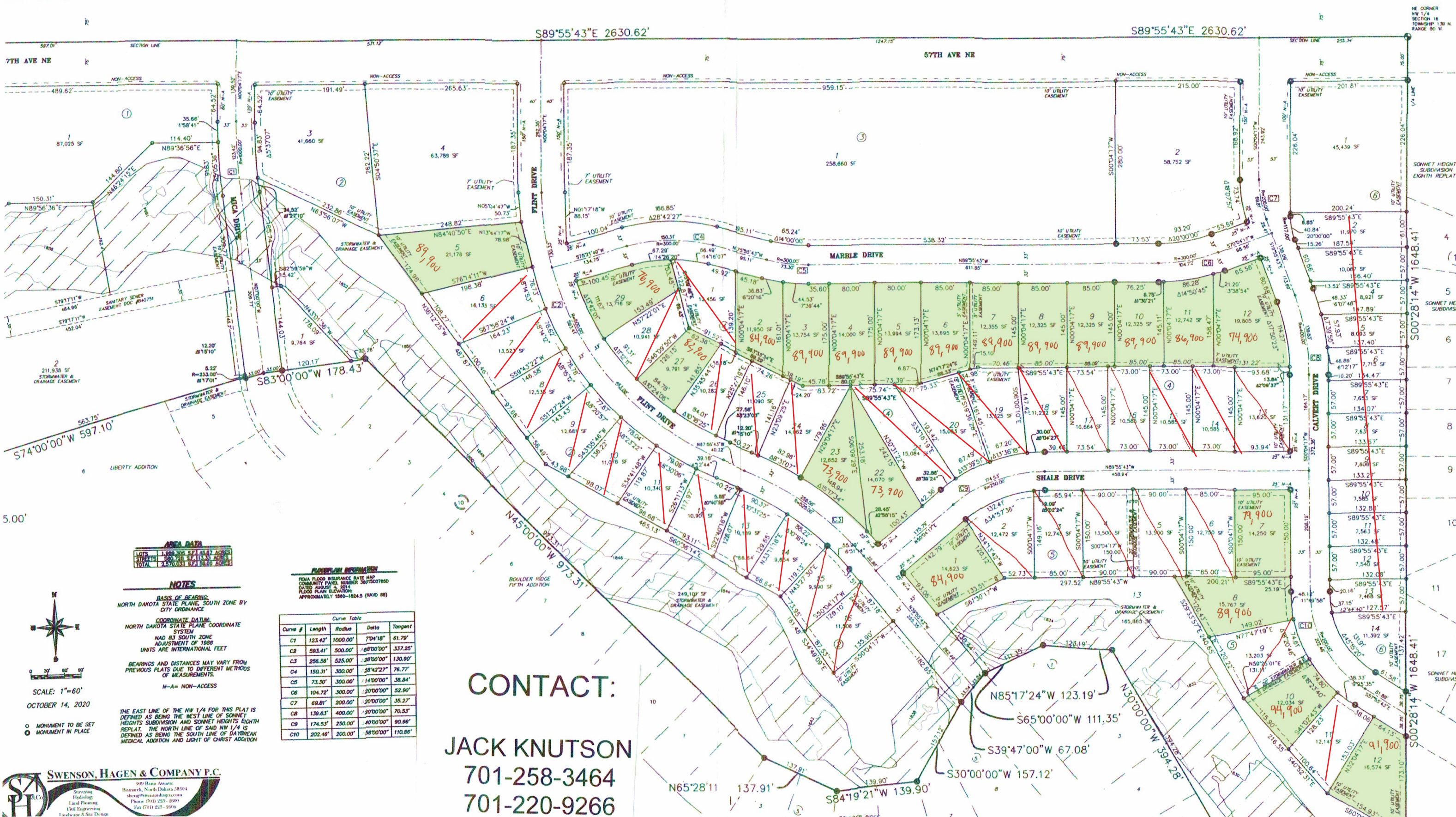
BEING A REPLAT OF ALL OF BOULDER RIDGE SEVENTH ADDITION OF PART OF THE NW 1/4 OF SECTION 16, TOWNSHIP 139 NORTH, RANGE 80 WEST BISMARCK, BURLEIGH COUNTY, NORTH DAKOTA

Lots available as of May 2024  
Prices subject to change.

DAYBREAK MEDICAL ADDITION

LIGHT OF CHRIST ADDITION

LIGHT OF CHRIST ADDITION



**AREA DATA**

|         |       |     |    |       |       |
|---------|-------|-----|----|-------|-------|
| LOTS    | 1,000 | 300 | SF | 1,417 | ACRES |
| STREETS | 500   | 200 | SF | 1,000 | ACRES |
| TOTAL   | 2,500 | 500 | SF | 2,417 | ACRES |

**NOTES**

BASE OF BEARING: NORTH DAKOTA STATE PLANE, SOUTH ZONE BY CITY ORDINANCE

COORDINATE DATA: NORTH DAKOTA STATE PLANE COORDINATE SYSTEM NAD 83 SOUTH ZONE ADJUSTMENT OF 1988 UNITS ARE INTERNATIONAL FEET

BEARINGS AND DISTANCES MAY VARY FROM PREVIOUS PLATS DUE TO DIFFERENT METHODS OF MEASUREMENTS.

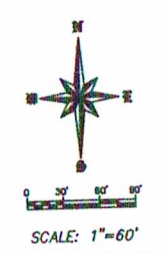
N-A= NON-ACCESS

**FLOODPLAIN INFORMATION**

FEMA FLOOD INSURANCE RATE MAP COMMUNITY PANEL NUMBER 30015007050 DATED AUGUST 4, 2014 FLOOD PLAN ELEVATION: APPROXIMATELY 1890-1824.5 (NAVD 88)

**Curve Table**

| Curve # | Length  | Radius   | Delta     | Tangent |
|---------|---------|----------|-----------|---------|
| C1      | 123.42' | 1000.00' | 7D4'18"   | 61.79'  |
| C2      | 593.41' | 500.00'  | 69D00'00" | 337.25' |
| C3      | 256.58' | 525.00'  | 88D00'00" | 130.90' |
| C4      | 150.31' | 300.00'  | 28D42'27" | 76.77'  |
| C5      | 73.30'  | 300.00'  | 14D00'00" | 36.84'  |
| C6      | 104.72' | 300.00'  | 30D00'00" | 52.90'  |
| C7      | 69.81'  | 200.00'  | 30D00'00" | 35.27'  |
| C8      | 139.83' | 400.00'  | 30D00'00" | 70.53'  |
| C9      | 174.53' | 250.00'  | 40D00'00" | 90.99'  |
| C10     | 202.46' | 200.00'  | 58D00'00" | 110.86' |



SCALE: 1"=60'  
OCTOBER 14, 2020

○ MONUMENT TO BE SET  
● MONUMENT IN PLACE

**SWENSON, HAGEN & COMPANY P.C.**

909 Basin Avenue  
Bismarck, North Dakota 58504  
shc@swensonhagen.com  
Phone (701) 223-2890  
Fax (701) 223-2696

Surveying  
Hydrology  
Land Planning  
Civil Engineering  
Landscape & Site Design

**CONTACT:**  
**JACK KNUTSON**  
701-258-3464  
701-220-9266

NE CORNER NW 1/4 SECTION 16 TOWNSHIP 139 N. RANGE 80 W.

SONNET HEIGHTS SUBDIVISION EIGHTH REPLAT

SONNET HEIGHTS SUBDIVISION

SONNET HEIGHTS SUBDIVISION