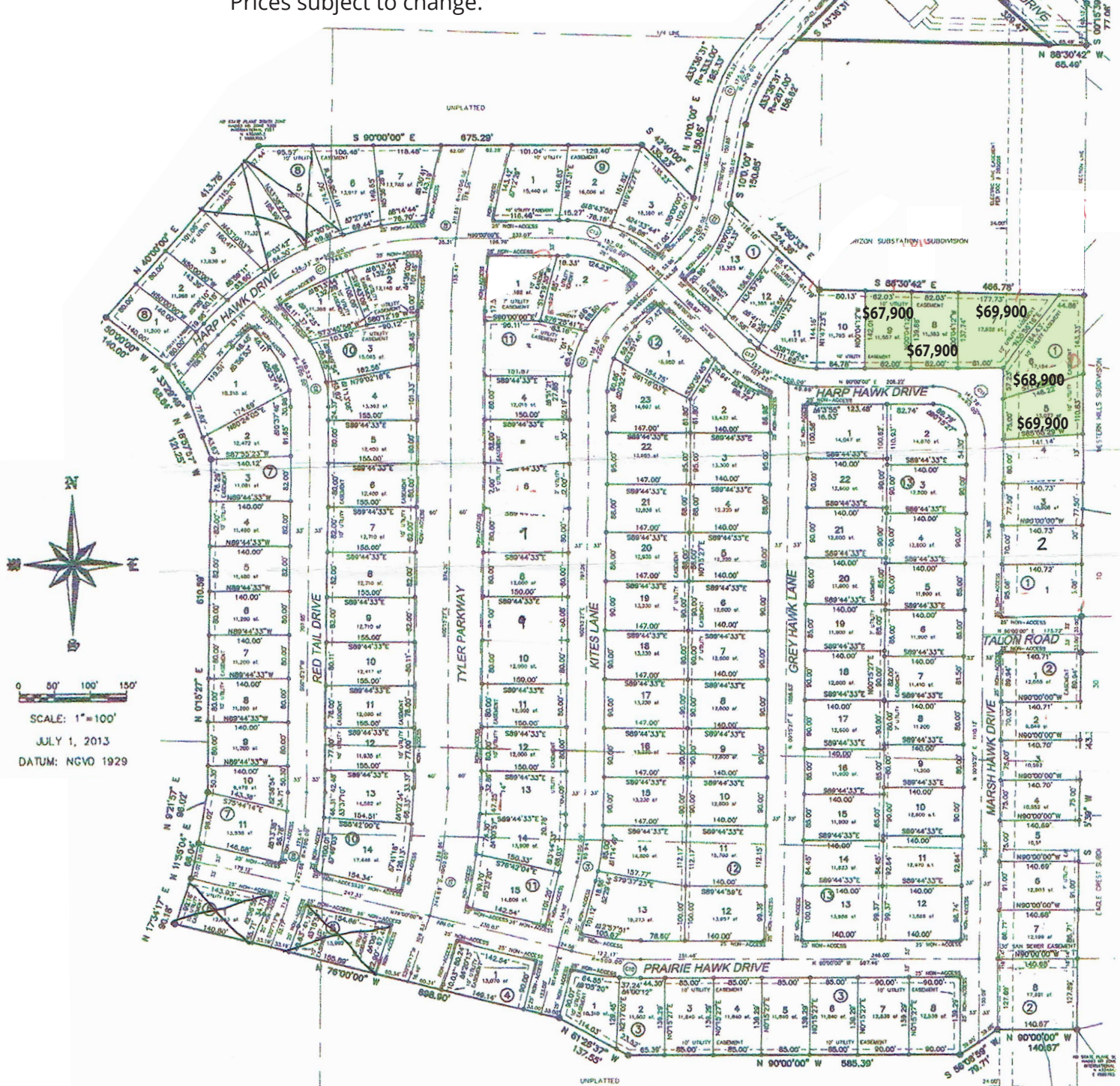


# EAGLE CREST SIXTH ADDITION

PART OF THE SE 1/4 AND THE NE 1/4 OF SECTION 18, TOWNSHIP 139  
NORTH, RANGE 80 WEST OF THE 5TH PRINCIPAL MERIDIAN,  
**BISMARCK, BURLEIGH COUNTY, NORTH DAKOTA**

Available lots as of April 1, 2025  
Prices subject to change.



## NOTES

BASES OF BEARING:  
NORTH DAKOTA STATE PLANE, SOUTH ZONE BY  
CITY ORDINANCE

BENCHMARK:  
HYDRANT #425, EAGLE CREST LOOP  
WEST OF GOLDEN EAGLE LANE,  
ELEV: 1836.00

COORDINATE DATUM:  
NORTH DAKOTA STATE PLANE COORDINATE  
SYSTEM  
NAD 83 SOUTH ZONE  
ADJUSTMENT OF 1998  
UNITS ARE INTERNATIONAL FEET

VERTICAL DATUM:  
NATIONAL GEODETIC VERTICAL DATUM OF 1929  
BEARINGS AND DISTANCES MAY VARY FROM  
PREVIOUS PLATS DUE TO DIFFERENT METHODS  
OF MEASUREMENTS

- MONUMENT TO BE SET
- MONUMENT IN PLACE

## AREA DATA

LOTS	1,644,108 S.F.	37.74 ACRES
STREET	775,870 S.F.	17.81 ACRES
TOTAL	2,419,978 S.F.	55.55 ACRES

## CURVE DATA

CURVE	DELTA ANGLE	TANGENT	RADIUS	ARC LENGTH
C1	33°38'31"	80.60'	300.00'	173.97'
C2	35°00'00"	83.08'	200.00'	122.17'
C3	44°44'33"	82.32'	200.00'	156.18'
C4	13°44'33"	48.20'	400.00'	85.84'
C5	10°51'50"	175.10'	1000.00'	346.69'
C6	14°53'23"	156.81'	1200.00'	311.85'
C7	50°00'00"	233.15'	500.00'	436.33'
C8	40°19'27"	73.30'	200.00'	140.53'
C9	19°51'50"	122.57'	700.00'	242.68'
C10	14°00'00"	61.39'	500.00'	122.17'
C11	90°15'27"	90.41'	90.00'	141.78'
C12	45°00'00"	82.84'	150.00'	147.92'

BOULDER RIDGE DEVELOPMENT  
CONTACT: JACK KNUTSON  
701-258-3464