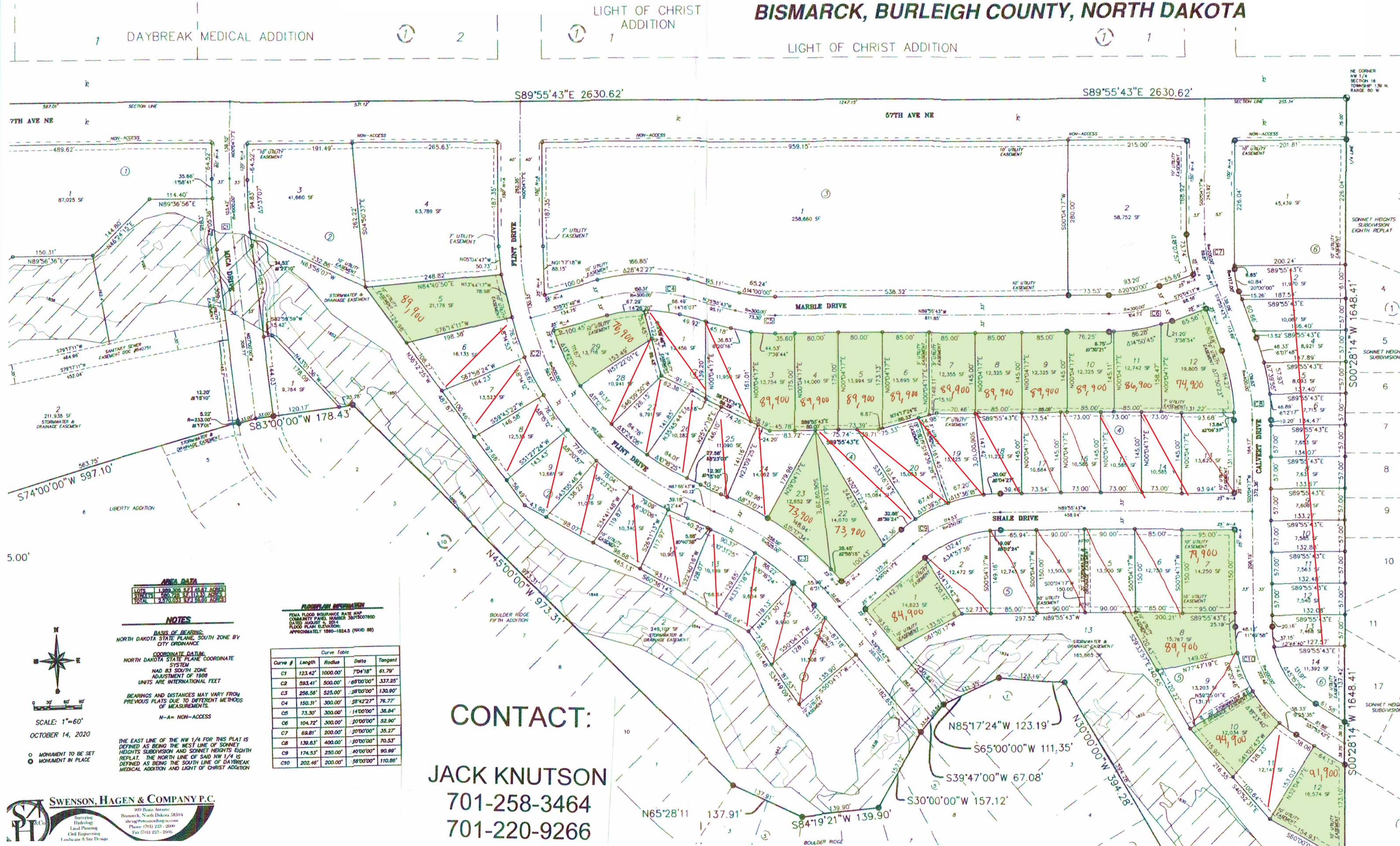


Lots in green available as of
September 2, 2025
Prices subject to change.

BOULDER RIDGE SEVENTH ADDITION FIRST REPLAT

BEING A REPLAT OF ALL OF BOULDER RIDGE SEVENTH ADDITION OF
PART OF THE NW 1/4 OF SECTION 16, TOWNSHIP 139 NORTH, RANGE 80 WEST
BISMARCK, BURLEIGH COUNTY, NORTH DAKOTA



AREA DATA

LOTS	1,000
SQ. FT.	2,500,000
ACRES	56.25

NOTES

BASE OF BEARING:
NORTH DAKOTA STATE PLANE, SOUTH ZONE BY
CITY ORDINANCE

COORDINATE DATA:
NORTH DAKOTA STATE PLANE COORDINATE
SYSTEM
NAD 83 SOUTH ZONE
ADJUSTMENT OF 1986
UNITS ARE INTERNATIONAL FEET

BEARINGS AND DISTANCES MAY VARY FROM
PREVIOUS PLATS DUE TO DIFFERENT METHODS
OF MEASUREMENTS.

N-A= NON-ACCESS

THE EAST LINE OF THE NW 1/4 FOR THIS PLAT IS
DEFINED AS BEING THE WEST LINE OF SONNET
HEIGHTS SUBDIVISION AND SONNET HEIGHTS EIGHTH
REPLAT. THE NORTH LINE OF S40 NW 1/4 IS
DEFINED AS BEING THE SOUTH LINE OF DAYBREAK
MEDICAL ADDITION AND LIGHT OF CHRIST ADDITION

CURVE DATA

Curve #	Length	Radius	Delta	Tangent
C1	123.42'	1000.00'	70°41'18"	61.79'
C2	593.41'	500.00'	68°00'00"	337.25'
C3	256.58'	525.00'	38°00'00"	130.90'
C4	150.31'	300.00'	28°42'27"	76.77'
C5	73.30'	300.00'	14°00'00"	38.84'
C6	104.72'	300.00'	30°00'00"	52.90'
C7	68.81'	200.00'	30°00'00"	35.27'
C8	139.83'	400.00'	30°00'00"	70.53'
C9	174.53'	250.00'	40°00'00"	90.89'
C10	202.46'	200.00'	58°00'00"	110.88'

CONTACT:
JACK KNUTSON
701-258-3464
701-220-9266