

BOULDER RIDGE SEVENTH ADDITION FIRST REPLAT

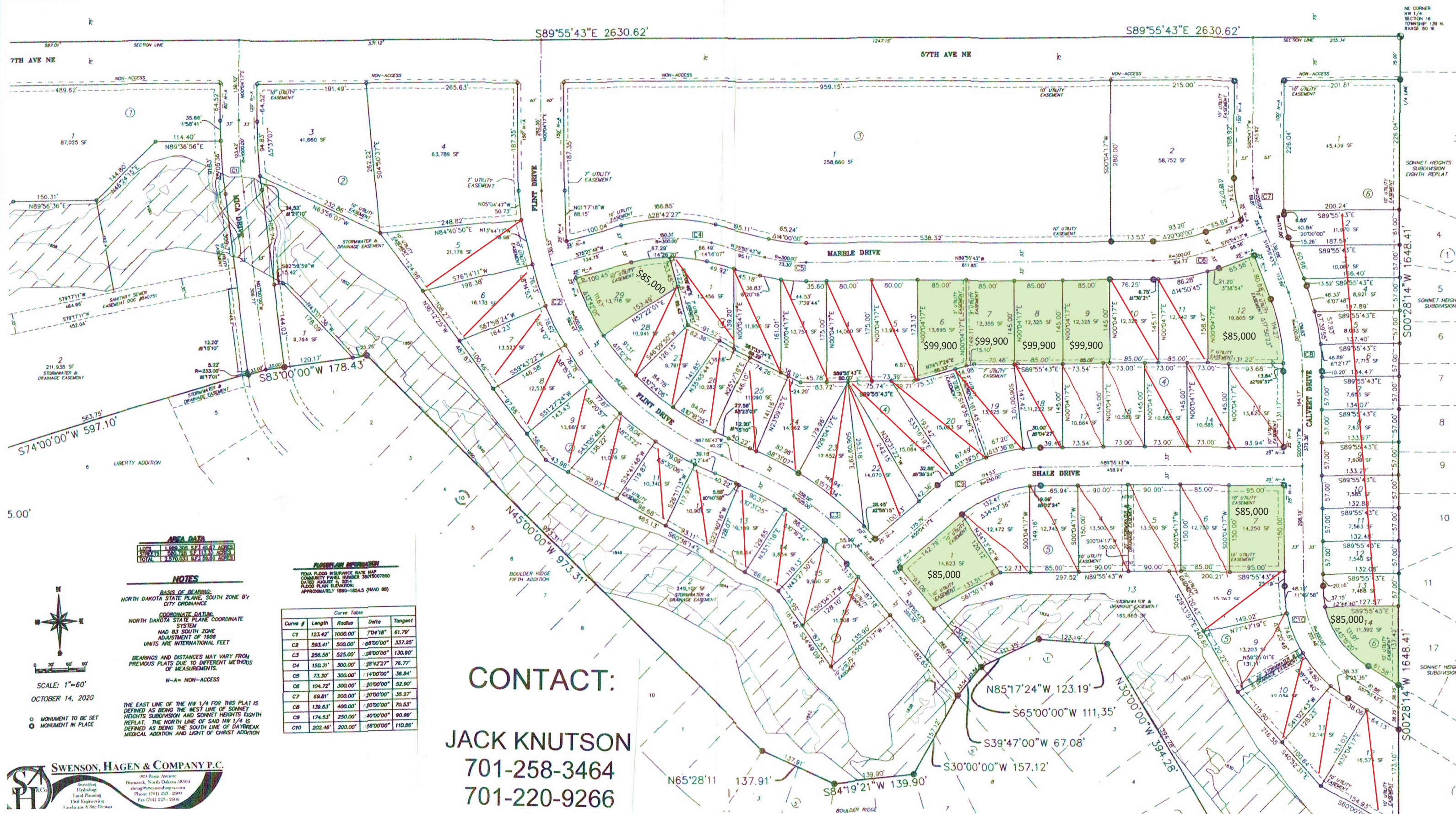
BEING A REPLAT OF ALL OF BOULDER RIDGE SEVENTH ADDITION OF PART OF THE NW 1/4 OF SECTION 16, TOWNSHIP 139 NORTH, RANGE 80 WEST BISMARCK, BURLEIGH COUNTY, NORTH DAKOTA

Lots in green available as of April 28, 2026
Prices subject to change.

DAYBREAK MEDICAL ADDITION

LIGHT OF CHRIST ADDITION

LIGHT OF CHRIST ADDITION



AREA DATA

LOTS	1,000	300	SPT	1,407	ACRES
STREETS	500	200	SPT	1,100	ACRES
TOTAL	2,500	500	SPT	2,500	ACRES

NOTES

BASE OF BEARING:
NORTH DAKOTA STATE PLANE, SOUTH ZONE BY CITY ORDINANCE

COORDINATE DATA:
NORTH DAKOTA STATE PLANE COORDINATE SYSTEM
NAD 83 SOUTH ZONE
ADJUSTMENT OF 1988
UNITS ARE INTERNATIONAL FEET

BEARINGS AND DISTANCES MAY VARY FROM PREVIOUS PLATS DUE TO DIFFERENT METHODS OF MEASUREMENTS.

N-A= NON-ACCESS

FLOODPLAIN INFORMATION

FEMA FLOOD INSURANCE RATE MAP
COMMUNITY PANEL NUMBER 3001500700
DATED AUGUST 4, 2014
FLOOD PLAN ELEVATION:
APPROXIMATELY 1890-1824.5 (NAVD 88)

Curve Table

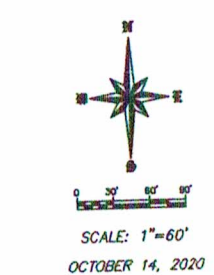
Curve #	Length	Radius	Delta	Tangent
C1	123.42'	1000.00'	70°41'8"	61.79'
C2	593.41'	500.00'	69°00'00"	337.25'
C3	256.58'	525.00'	38°00'00"	130.90'
C4	150.31'	300.00'	28°42'27"	76.77'
C5	73.30'	300.00'	14°00'00"	36.84'
C6	104.72'	300.00'	30°00'00"	52.90'
C7	69.81'	200.00'	30°00'00"	35.27'
C8	139.83'	400.00'	30°00'00"	70.53'
C9	174.53'	250.00'	40°00'00"	90.99'
C10	202.46'	200.00'	58°00'00"	110.86'

CONTACT:
JACK KNUTSON
701-258-3464
701-220-9266

SWENSON, HAGEN & COMPANY P.C.

909 Basin Avenue
Bismarck, North Dakota 58504
shc@swensonhagen.com
Phone (701) 223-2890
Fax (701) 223-2896

Surveying
Hydrology
Land Planning
Civil Engineering
Landscape & Site Design



○ MONUMENT TO BE SET
● MONUMENT IN PLACE